



Integrated Systems  
for Air Traffic Control  
and Control Room Management

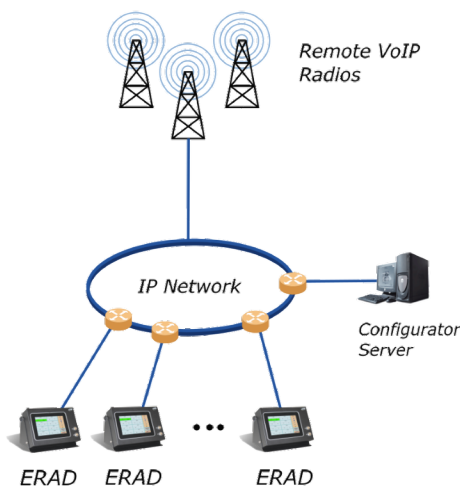
# ERAD



## ERAD Always operational

ERAD (Emergency Radio Access device) is an operator terminal designed to ensure continuity of radio communications in the event of an emergency at air traffic control centres.

Thanks to its *All-in-one* architecture it is completely independent of the existing MULTIFONO® VCS network and is able to guarantee communication with remote radio devices even if the main system is out of use or there are connection problems on the usual transmission paths.



ERAD mounts a 7-inch touch-screen and has head-phone/microphone/PTT inputs that enable it to function as a complete operating position. Thanks to the internal gateway, it connects autonomously to a WAN or LAN based on the IP protocol.

ERAD can manage VoIP connections simultaneously to max. 8 single channel IP radios using the EUROCONTROL EUROCAE ED137B standard and SIP/RTP protocol for voice traffic.

Moreover, using multiple ERAD systems it is possible to cope with any need for radio communication. For its reliability and modularity characteristics, ERAD is the ideal recovery system for both small control towers and for the Approach or ACC center.

## A familiar user interface

The graphical interface, intuitive and easy to use, has a layout similar to that used on the keyboards of the system MULTIFONO® VCS allowing operators to respond quickly to the operational emergency. In addition to the buttons for connecting to remote radios, the screen has a set of keys for normal management operations such as: Operator ID, setting audio levels, configuration information window, presence of electro-acoustic devices, PTT function, date and time, etc.

## Electro-Acoustic compatibility

The terminal integrates a speaker and two frontal connections for an operator and an instructor to which you can connect microphone, headset and PTT command supplied.

The connections are also compatible with the electro-acoustic devices in use on the main MULTIFONO® VCS system. In case of emergency the operator can quickly transfer its operation on the ERAD system.



Integrated Systems  
for Air Traffic Control  
and Control Room Management

## Easy to assemble..

Thanks to its compact size, ERAD can be installed quickly and become operational in a very short time. It can be housed inside a console plane with the auxiliary fitting frame or mounted on a monitor arm via the Vesa 75x75 rear mount.

## ..and to configure

To allow maximum versatility even in critical situations, ERAD can be easily configured via LAN port through the MMS® platform (Multifono Management System).

Alarm management uses the latest SNMPV2 protocol for a constant and real-time monitoring of the state of the system and can be easily integrated inside an Alarm Management SNMP Standard.

## ERAD Technical Informations

### Basic Characteristics

Power supply:	24 - 28 VDC
Consumption:	15 W
Operative Temperature:	from 0°C to +50°C
Dimensions:	260x177x68,5 mm

### Display

Type:	TFT
Touchscreen:	Capacitive-Multitouch
Resolution:	1024x600,WSVGA
Active display area:	7" diagonal
Colors:	16 millions. High Bright/MVA
Backlight:	LED
Brightness:	700 Cd/m <sup>2</sup> typ.

### Radio Management

Type:	VoIP single-channel
Protocol:	ED 137 B
Interfaceable radio units:	max. 8 simultaneously
Audio Encoding:	G711-a law

### Operator Interface

microphone/headphone/PTT port for operator and instructor	2
---	---

### Installation

Auxiliary fitting frame 301,6x246,10 mm for housing inside a console plane

Vesa 75x75

**SITTI S.p.A.**

Via Cadorna 69/73 - 20090 Vimodrone (MI) - Italy  
www.sitti.it - commerciale@sitti.it - +39 02 2507121